



Dear Parents,

On behalf of the Tahoe City PUD Parks & Recreation Department, the camp staff would like to welcome you and your child(ren) to Camp Skylandia! Our camp has over 25 years of summer tradition and we will strive to keep that tradition growing while leaving our own impression for years to come. **Please note, on sessions D (July 8-11) and H (August 5-8), there is no camp on Fridays, after the Thursday Camp Overnights.**

Each week we will feature a different theme and your child will participate in a variety of group games both active and passive, arts and crafts, beach time and other enrichment activities. We will also feature a different field trip or outing each week on Wednesdays and will be departing from Skylandia between 9:30am and 10:00am sharp. For Camp, please pack for fun in the sun and a large lunch! Dress-up day is at the end of each week, and we encourage campers and staff to dress up for our camp theme and show off their creativity!

Please remember to pack these important items for your child every day:

- Sack Lunch and Snacks
- Water Bottle (Campers must have their own refillable water bottle and staff will assist in refilling empty water bottles)
- Sunscreen
- Closed-Toe Shoes
- Water Shoes for the Beach
- Bathing Suit and Towel (It is recommended that your child comes prepared wearing their suit under their clothes).

**Also, to alleviate a massive lost and found collection, please remember to write your child's name on everything they bring to camp including hats, bags, lunch boxes, towels, sweatshirts, etc.**

### **Camp Skylandia Overnights:**

Our Camp Skylandia Overnights are scheduled for Thursday July 11 and Thursday August 8 and are optional for grades 1-5, Pinecones (aka Kinders) and CITs. Campers will attend camp all day and be picked up at 3:30pm to go home, have dinner and grab items for the overnight. Our Camp Overnight will be held at Skylandia Beach with drop-off at 7:00pm. We will not be providing dinner but will have snacks for movies and campfire fun. Campers are also welcome to come for the games and movies on overnights and then be picked up around 9:30-10pm if they do not want to stay overnight. Breakfast will be served on Friday morning at 7:00am and pick-up is 8:00am.

Please remember, there is NO CAMP on the Fridays after the overnights (Friday July 12 and Friday August 9).

### **For overnights, please pack:**

- Sleeping bag
- Pillow
- Blanket
- Warm clothes (Remind your child to NOT have food in their sleeping bag during the overnight)

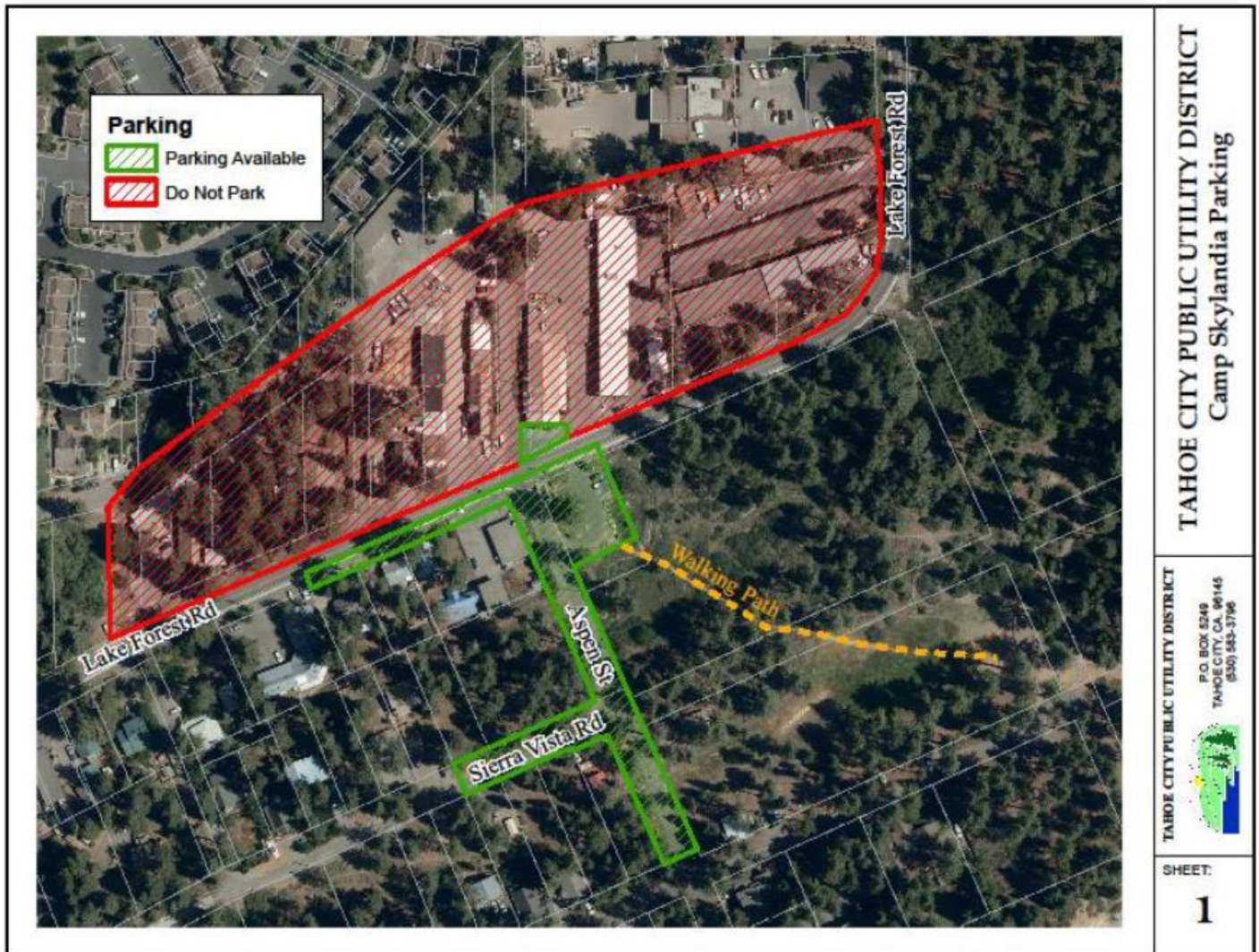
**Drop-Off and Pick-Up Procedures:**

Drop-Off and Pick-Up will be at Skylandia Park, corner of Lake Forest Road and along the northeast side of Aspen Street (map included below). For easiest access and to alleviate traffic, please come in through Bristlecone and Lake Terrace Avenue to Aspen Street.

- Drop-Off Times: Between 9:00am and 9:30am
- Pick-Up Times: Between 3:15pm and 3:30pm

We do recognize that traffic may be an issue. If a situation arises where you may be late in picking up, please feel free to call our office (530-583-3440 ext. 2) and let us know as soon as possible. If you are having someone other than the person who dropped off your child pick them up, please let camp staffers know as soon as possible.

**Camp Skylandia Parking Map:**



TAHOE CITY PUBLIC UTILITY DISTRICT  
Camp Skylandia Parking

TAHOE CITY PUBLIC UTILITY DISTRICT  
P.O. BOX 5249  
TAHOE CITY, CA 96145  
(530) 583-3796

SHEET:  
**1**